

Kistengriff nach DIN 3136 - Case handle acc. DIN 3136

Edelstahl 1.4301, matt geschliffen
stainless steel AISI 305, satin finish

Art.-Nr.	Beschreibung description
AV11328100	100 x 80 mm

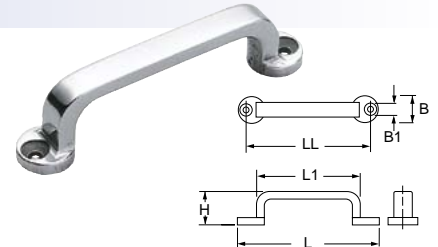


Griffe - handles

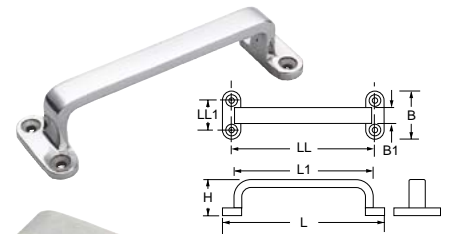
Edelstahl 1.4301, poliert
stainless steel AISI 305, mirror finish



Art.-Nr.	L mm	L1 mm	LL mm	B mm	H mm	B1 mm
LAFT100	100	75	88	18	25	10



Art.-Nr.	L mm	L1 mm	LL mm	B mm	H mm	LL1 mm	B1 mm
LAFT120	120	102	106	36	27	24	12
LAFT150	150	126	132	15	45	30	5



Edelstahl 1.4301, matt geschliffen
stainless steel AISI 305, satin finish

Art.-Nr.	L mm	L1 mm	LL mm	B mm	H mm	Hi mm	S mm
AV10193160	160	115	142	20	35	31	4
AV10193200	200	152	182	20	37	33	4



Kunststoff, schwarz
Nylon, black

Art.-Nr.	L mm	LL1 mm	LL mm	B mm	H mm	Hi mm
EK27270S	187	-	134	37	68	45
EK27262B	165	20	136	42	66	42

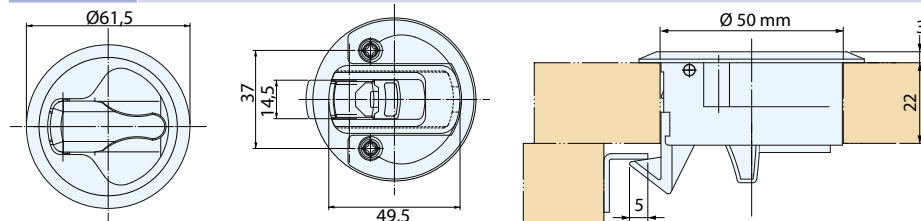


Schnappverschluss - Snap lock

Tür- und Lukenschnäpper aus Polycarbonat, beidseitig zu öffnen
Door and Hatch Latch made of Polycarbonate, can be open on both sides



Art.-Nr.	Øa mm	LL mm	B mm	Farbe
LALJ61W	61,5	37	22	weiß white
LALJ61B	61,5	37	22	schwarz black



Tür- und Lukenschnäpper aus Polycarbonat, beidseitig zu öffnen
Door and Hatch Latch made of Polycarbonate, can be open on both sides

Art.-Nr.	Øa mm	LL mm	B mm	Farbe
EZ14005	61,5	37	22	weiß white

