

Wir empfehlen zur Vermeidung von Scherkräften den Einsatz eines Schäkels zwischen Ankerschaft und Ankerverbinder.  
We recommend to use shackles between shaft and connector to prevent shearforces.

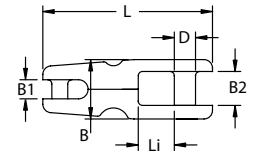
Ankerverbinder - Chain Connectors

Edelstahl 1.4401  
stainless steel AISI316



| Art.-Nr. | L mm | B mm | B2 mm | D mm | Li mm | B1 mm | Kette chain | SWL kg | BRL kg |
|----------|------|------|-------|------|-------|-------|-------------|--------|--------|
| NB4308   | 80   | 28   | 16    | 10   | 19    | 9     | 6-8         | 850    | 2500   |
| NB4310   | 100  | 37   | 22    | 13   | 23,5  | 13    | 8-12        | 2000   | 5000   |

Stahl verzinkt  
galvanized steel



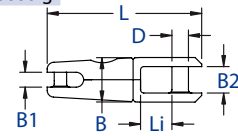
| Art.-Nr. | L mm | B mm | B2 mm | D mm | Li mm | B1 mm | Kette chain | SWL kg | BRL kg |
|----------|------|------|-------|------|-------|-------|-------------|--------|--------|
| NB4408   | 80   | 28   | 16    | 10   | 19    | 9     | 6-8         | 850    | 2500   |
| NB4413   | 144  | 54   | 31    | 16   | 26    | 16    | 12-14       | 2000   | 9500   |

Ankerwirbel - Chain Swivels

Edelstahl 1.4401  
stainless steel AISI316



| Art.-Nr. | L mm | B mm | B2 mm | D mm | Li mm | B1 mm | Kette chain | SWL kg | BRL kg | Gew. weight |
|----------|------|------|-------|------|-------|-------|-------------|--------|--------|-------------|
| NB4508   | 93   | 28   | 16    | 10   | 19    | 9     | 6 - 8       | 850    | 2500   | 240 g       |
| NB4510   | 117  | 36   | 22    | 13   | 23    | 13    | 8 - 12      | 2000   | 5000   | 550 g       |
| NB4513   | 155  | 66   | 35    | 18   | 30    | 17    | 12-14       | 3000   | 9500   | 2350 g      |
| NB4516   | 190  | 86   | 43    | 22   | 42    | 20    | 16-20       | 5000   | 20000  | 5000 g      |



Schäkel Standardqualität verzinkt - Shackles standard quality galvanized

Standardausführung, Stahl feuerverzinkt  
Standard type, hot dipped galvanized steel

| Art.-Nr.  | Ø mm | Li mm | Bi mm | Packmenge package |
|-----------|------|-------|-------|-------------------|
| VS9106-10 | 6    | 24    | 12    | VP à 10 Stück     |
| VS9108-10 | 8    | 32    | 16    | VP à 10 Stück     |
| VS9110-10 | 10   | 40    | 20    | VP à 10 Stück     |
| VS9112-10 | 12   | 48    | 24    | VP à 10 Stück     |
| VS9114-10 | 14   | 56    | 28    | VP à 10 Stück     |
| VS9116    | 16   | 64    | 32    |                   |
| VS9120    | 20   | 76    | 38    |                   |

Geschweifte Ausführung, Stahl feuerverzinkt  
Bow type, hot dipped galvanized steel

| Art.-Nr.  | Ø mm | Li mm | Bi mm | B2 mm | Packmenge package |
|-----------|------|-------|-------|-------|-------------------|
| VS9206-10 | 6    | 24    | 12    | 17    | VP à 10 Stück     |
| VS9208-10 | 8    | 32    | 16    | 22    | VP à 10 Stück     |
| VS9210-10 | 10   | 40    | 20    | 28    | VP à 10 Stück     |
| VS9212-10 | 12   | 48    | 24    | 34    | VP à 10 Stück     |
| VS9214-10 | 14   | 56    | 28    | 42    | VP à 10 Stück     |
| VS9216    | 16   | 64    | 32    | 52    |                   |
| VS9220    | 20   | 76    | 38    | 53    |                   |

